



Litter Containment System™

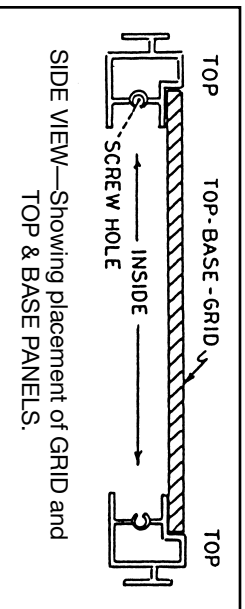
# MODEL #LCS 300 Assembly Instructions

IT IS IMPORTANT TO READ  
BOTH PAGES OF INSTRUCTIONS

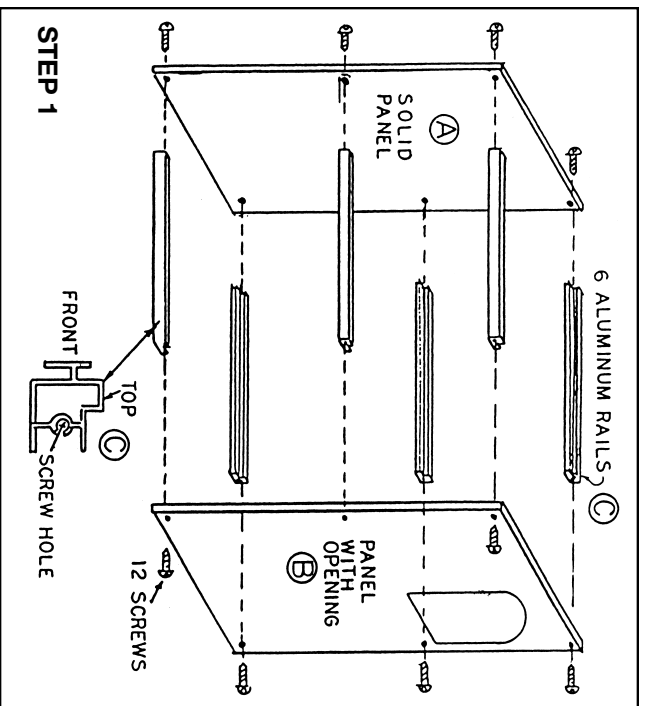
You will need a **HEAVY DUTY**  
Phillips-head or power screwdriver.  
**OPTIONAL: MAY BE ASSEMBLED FOR  
RIGHT OR LEFT SIDE ENTRY.**

## MODEL 300 Light Oak PARTS LIST:

ITEM	DESCRIPTION
A	1 Solid Side Panel
B	1 Side Panel w/opening
C	6 RAILS—Anodized Aluminum
D	1 Base Panel
E	1 Top Panel
F	1 Plastic GRID
G	2 Support RODS (1 w/Velcro strip & 1 w/hole for screw)
H	1 Plastic Divider Panel w/Velcro strip
I	1 Lower Door Panel—Front
J	1 Lower Door Panel—Rear
K	1 Upper Door Panel—Rear
L	1 Acrylic Door Panel—Front
M	12 Screws and Caps (Phillips)
P	1 Screw and Washer Set



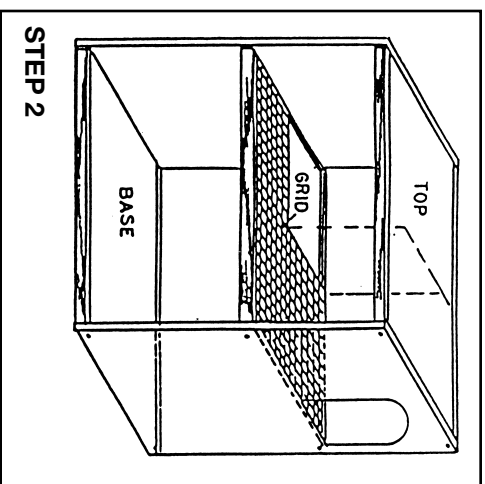
**Baillie Corporation**  
P.O. Box 462 • Lakehurst, NJ 08733  
1-800-434-1919



### STEP 1

Before assembly begins, stand the **SIDE PANELS (A&B)** flat against each other, checking to be sure the pre-drilled holes match. The holes are slightly closer to the edge at the bottom than at the top. This will ensure correct placement of the panels.  
Connect the **SIDE PANELS (A&B)** to the **RAILS (C)** using the screws provided (**M**). **DO NOT OVER-TIGHTEN** screws on Melamine **SIDE PANELS** as it will cause indentation, preventing the Plastic Screw **CAPS** from remaining in place.

It can be useful to rub screws across wet bar soap to make turning easier.



### STEP 2

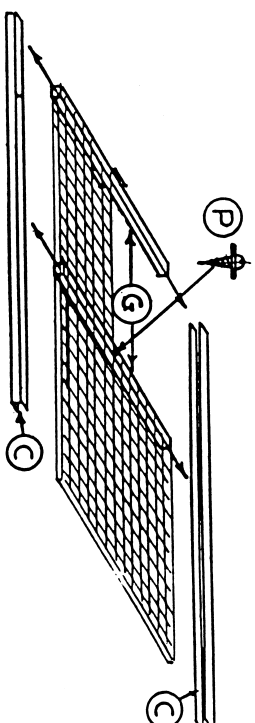
#### STEP 2

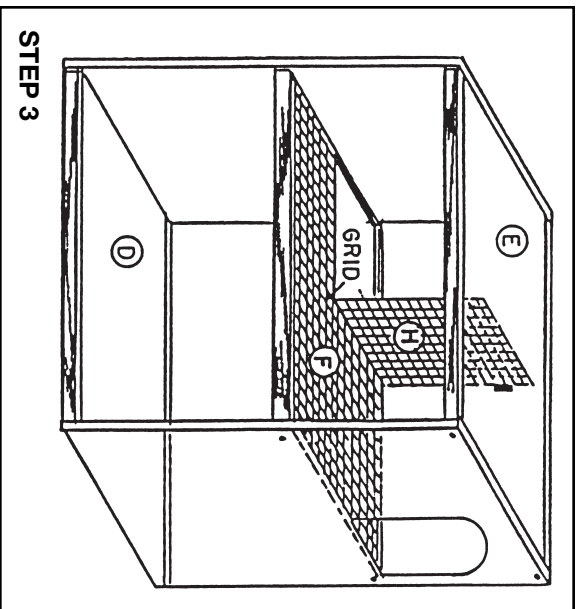
The **SUPPORT RODS** will be “under” the **GRID** and “between” the **Aluminum RAILS (C)**. They will be inserted into the “open” area of the **RAILS**, going back to front to support the **PLASTIC GRID**.

1. Peel **Velcro** on **SUPPORT ROD**. Put one end into the interior open area of the rear **RAIL** at an angle, right next to the **SOLID SIDE PANEL**.

2. Push other end of **ROD** into front **RAIL**, then straighten, **PRESSING** **Velcro** against **SOLID SIDE**.

3. Place center **ROD (G)** w/screw hole into **RAIL** at an angle, then straighten. Place **PLASTIC GRID** on top of **RAILS**. Put screw and washer on **TOP** of **GRID** and screw into pre-drilled hole in **ROD**. Tighten enough to hold firm, being careful not to overtighten.



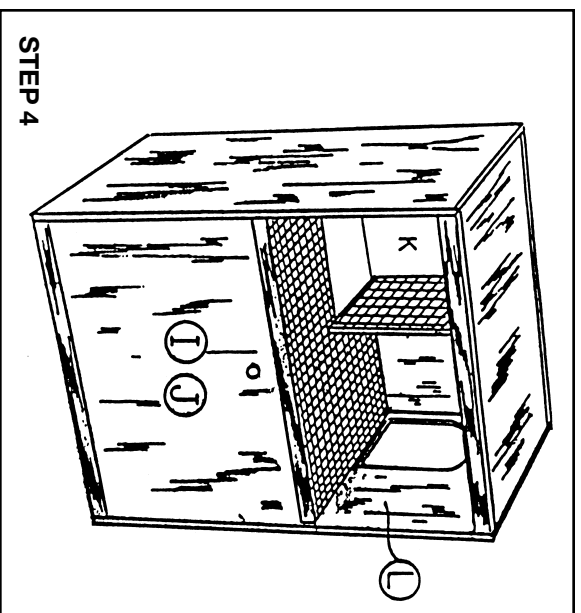


**STEP 3**

**STEP 3**

Insert the REAR UPPER DOOR PANEL (K) first into the track on Upper RAIL (C), then lower it into the track on the Middle RAIL.

Engage teeth on bottom of DIVIDER PANEL (H) into PLASTIC GRID, with the Velcro strip toward the rear. PEEL tape from Velcro strip so adhesive surface is exposed. Then slide DIVIDER PANEL back so adhesive will adhere to REAR UPPER DOOR PANEL. Press in place.



**STEP 4**

**STEP 4**

Place BASE PANEL (D) and TOP PANEL (E) onto Lower and Upper RAILS as shown in the "SIDE VIEW" detail.

Insert LOWER DOOR PANELS (I & J) into Front and Rear openings by lifting *first* into Upper track, then lowering into Lower track on Bottom RAILS.

PEEL protective covering from the UPPER ACRYLIC DOOR PANEL (L) and insert into opening as above.

CHECK to be sure all screws are tight and the RAILS do not rotate! SNAP screw Caps over the screw heads.

**NOTE:** If at any time the DOOR panels seem to fit too loose or too tight, this can be corrected by a slight rotation of one or more RAILS.

**30 DAY MONEY BACK GUARANTEE**  
Does not include shipping & handling. MUST call for authorization and return instructions. It is advised that you retain all original packaging until you are certain your cats have adapted. (We cannot accept parts damaged by urine for refund.)

